



70 Horseferry Road, Westminster
London SW1P

GARTON JONES.COM



70 Horseferry Road, Westminster
London, SW1P

GARTON JONES.COM

49 Marsham Street Sales +44 (0) 20 7340 0480
London westminster@gartonjones.com
SW1P 3DP www.gartonjones.com

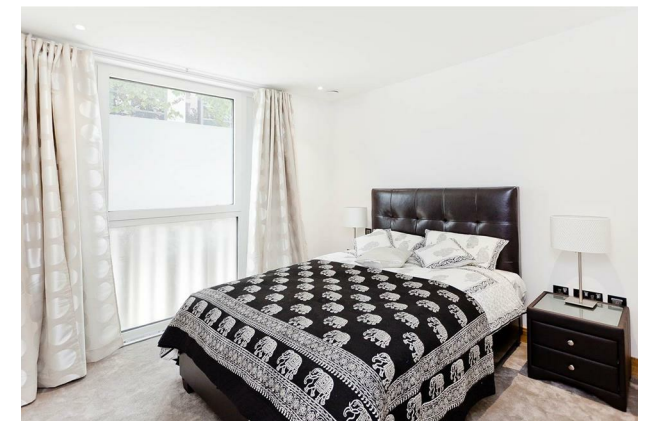
£1,225,000 Leasehold

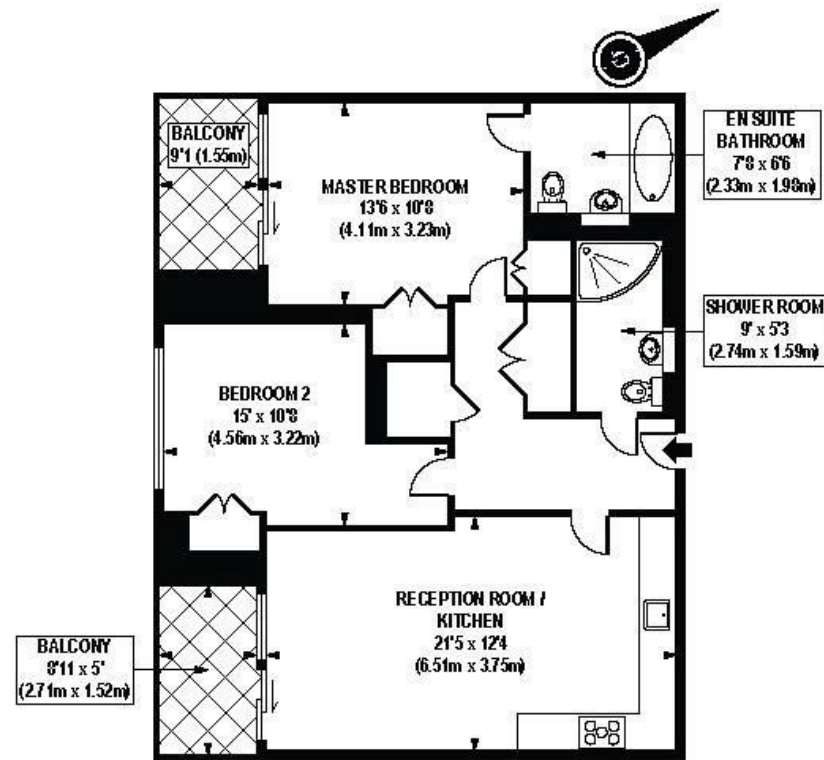
A well presented 2 bedroom apartment on the ground floor of this new popular development by Barratt Homes, located in the heart of Westminster and only moments from the River Thames. The apartment measures at 795 Square Feet (73.82) and comprises of an open plan reception room with a smart fitted kitchen with Miele appliances, fitted wardrobes to both bedrooms, 2 luxury bathrooms (1 en-suite), good storage, balcony and secure underground parking space. Residents will benefit from an array of amenities including a 24 hour concierge, a fully equipped fitness suite and access to an attractive landscaped courtyard garden with water feature. The Courthouse is fortunate to be in a superb Westminster location, being only 10 minutes from St James' Park and Westminster tube stations, as well as only a short walk to Victoria station. The Courthouse also benefits from a close proximity to attractions such as St James' Park, Westminster Abbey, Big Ben and universities such as LSE and King's College.

Service Charges: £5000 per annum
Ground Rent: £1000 per annum
Long Leasehold: 997 Years Remaining

EPC certificate available on request.

- Brand New 2 Bedroom Apartment
- 2 Luxury Bathrooms (1 En-Suite)
- Ground Floor of 10 Floors
- Dual Aspect Open Plan Reception Room
- Furnished With Brand New Modern Furniture Pack
- Balcony
- Secure Parking
- Fitness Suite
- Landscaped Communal Gardens
- 24 Hour Concierge





GROUND FLOOR

APPROX. GROSS INTERNAL FLOOR AREA 796 sq. ft / 73.82 sq. m

